

# FIA European Rally Trophy Final 2016

**RALLYE WALDVIERTEL N**

17. - 19. November 2016

www.waldviertel-rallye.at

Logos: FIA EUROPEAN RALLY TROPHY, vnz, krems, UNIOR, Bezirke Blätter, ATC METALLWELT, modul, ATC, TOTAL, ORM, RALLYESHOW, www.waldviertel-rallye.at

**TOTAL RALLYE SHOW 2016 ST. PÖLTEN**

30 Jahre **st.pölten** Landeshauptstadt

vaz www.vaz.at

**ORM**  
ÖSTERREICHISCHE RALLYE STAATSMEISTERSCHAFT

**FIA**  
EUROPEAN RALLY TROPHY

supplementary regulations 2016



Bezirks Blätter

**ZV. BADEN ÖAMTC**

**WALD VIERTEL**

**WWW.WALDVIERTEL-RALLYE.AT**

**st.pölten**

18. November: Start und lauchh final event 2016 with TOTAL RALLYESHOW St. Pölten.

19. November: SS's in Langenlois, Schönberg, Manhartsherg, Gföhl, Kronsegg, St. Leonhard, Gars am Kamp

Logos: ORF, Jansen COMPETITION, Bezirke Blätter, UNIOR, SPORT.LAND. N, TOTAL, WKO NÖ, ATC, MSRR NEULENGBACH

Organizer: Organisation Waldviertel Rallye, ÖAMTC ZV Baden & MSRR Neulengbach, c.o. Helmut Schöpf „Event & Organisation“, A-3071 Böheimkirchen, Untere Hauptstrasse 18

# FIA EUROPEAN RALLY TROPHY & ORM-ORC FINAL EVENT 2016

## CONTENTS

|    |   |
|----|---|
| 3  | 1. INTRODUCTION                                   |
| 3  | 2. ORGANISATION & DESCRIPTION                     |
| 5  | 3. PROGRAM  |
| 6  | 4. ENTRIES  |
| 6  | FIA CLASSES / GROUPS (European Rally Trophy 2016) |
| 7  | NATIONAL CLASSES / GROUPS                         |
| 8  | 5. INSURANCE                                      |
| 9  | 6. ADVERTISING & IDENTIFICATION                   |
| 9  | 7. RIMS & TYRES                                   |
| 9  | 8. FUEL   |
| 10 | 9. RECONNAISSANCE                                 |
| 10 | 10. ADMINISTRATIVE CHECKS                         |
| 11 | 11. SCRUTINEERING, MARKING & SEALING              |
| 11 | 12. OTHER PROCEDURES                              |
| 13 | 13. IDENTIFICATION OF OFFICIALS                   |
| 14 | 14. CLASSIFICATION AND PRICES                     |
| 14 | 15. FINAL CHECKS & PROTESTS                       |
| 15 | APPENDIX I - ITINERARY - 1st LEG                  |
| 16 | APPENDIX I - ITINERARY - 2nd LEG                  |
| 17 | APPENDIX II - SS RECONNAISSANCE SCHEDULE          |
| 18 | APPENDIX III - COMPETITORS RELATION OFFICER       |
| 19 | APPENDIX IV - COMPETITION NUMBERS AND ADVERTISING |
| 20 | APPENDIX V - NON-LIABILITY CLAUSE                 |
| 20 | APPENDIX V - ARBITRATION AGREEMENT                |
| 21 | OVERVIEW MAP CENTRAL RALLY TROPHY                 |
| 22 | MAP RALLYSHOW ST.PÖLTEN                           |

### Attachments available online:

DOWNLOADS: - online entry form, OSK car pass, Service space order  
download / fill in on the event homepage <http://www.rallye-waldviertel.at>

please use the online entry system.





## 1. INTRODUCTION

### 1.1 General

The Rally Waldviertel will be run in compliance with:

- the FIA International Sporting Code (ISC) and its appendices
- FIA Regional Rally Sporting Regulations (FIA-RRSR)
- OSK Rally Technical Regulations for national classes
- this supplementary regulations and its bulletins
- road traffic regulations of the Republic of Austria
- Austrian law for motor vehicles
- implementing rules of the Austrian law for motor vehicles

FIA regulations can be found at [www.fia.com](http://www.fia.com) and OSK regulations at [www.osk.or.at](http://www.osk.or.at). Modifications, amendments and/or changes to these Supplementary Regulations will be announced only by numbered and dated Bulletins (issued by the Organizer, the Stewards or the Clerk of the Course for changes or amendments concerning itinerary or final posting time). The Organizer reserves the right to postpone or cancel the rally. Force majeure release the Organizer from complying with its obligations.

**Place & Date: ST.PÖLTEN / GRAFENEGB / NIEDERÖSTERREICH**  
17 - 19 November 2016

### 1.2 Tarmac / Gravel

62% Tarmac, 38% Gravel

### 1.3 Overall SS distance and total distance of the itinerary

- special stages: 163,44 km
- overall distance 420,65 km
- overall stages: 12
- number of different special stages: 6
- number of round course: 2 (4)
- number super special stages: 1 (2)
- number of sections: 6
- number of legs: 2

## 2. ORGANISATION & DESCRIPTION

### 2.1 FIA titles for which the rally counts

FIA European Rally Trophy - Final

#### 2.1.1 FIA Classification

FIA European Rally Trophy for Drivers and Co Drivers (FIA ERT)

FIA ERT 2 Trophy (ERT2) for Drivers and Co-Drivers

FIA ERT 3 Trophy (ERT3) for Drivers and Co-Drivers

FIA ERT Junior Trophy (ERTJ) for Drivers

#### 2.1.2 Other titles for which the rally counts

OSK Rally Championships & Rally Cups 2016

Niederösterreich Rally Trophy

### 2.2 Visa Numbers:

|               |                       |            |
|---------------|-----------------------|------------|
| FIA VISA No.: | <b>30ERT/27092016</b> | 27.09.2016 |
| ASN VISA No.: | <b>RY04/2016</b>      | 22.08.2016 |

### 2.3 Organizer's name and contact details

ORGANISATION WALDVIERTEL RALLYE ÖAMTC ZV Baden & MSRR Neulengbach

c/o: event&organisation

Helmut Schöpf, Untere Hauptstraße 18

3071 Böheimkirchen - AT

Tel.: +43 664 413 29 15

Fax: +43 2743 77 487

Email: [orga@waldviertel-rallye.at](mailto:orga@waldviertel-rallye.at)

Internet: [www.waldviertel-rallye.at](http://www.waldviertel-rallye.at)

### 2.4 Organizing committee

Chairman: Helmut Schöpf. Members: Michael Straßegger, Christian Grünwald, Dieter Kahri, Helmut Plach, Bernhard Kloiber, Markus Zelenka, Claudia Bidlas, Joe Rittner.

## 2.5 Stewards of the Meeting

|                            |                   |           |
|----------------------------|-------------------|-----------|
| Chairman:                  | Uwe SCHMIDT       | DEU / FIA |
| Stewards:                  | Miha LEVEC        | SVN / FIA |
| (Chairman ORM)             | Wolfgang NÖLSCHER | AUT / OSK |
| Secretary of the Stewards: | Claudia BIDLAS    | AUT       |

## 2.6 Delegates

|               |            |           |
|---------------|------------|-----------|
| FIA Observer: | Miha LEVEC | SVN / FIA |
|---------------|------------|-----------|

## 2.7 Senior officials

|                               |                         |     |
|-------------------------------|-------------------------|-----|
| Clerk of the Course:          | Helmut SCHÖPF           | AUT |
| Deputy CoC:                   | Michael STRASSEGGER     | AUT |
| Assistant of Deputy CoC.      | Oliver PLEYER           | AUT |
| Secretary of the Event        | Silvia BIDLAS           | AUT |
| Chief Scrutineer:             | Johann SCHMIDT          | AUT |
| OSK Scrutineers               | Alexander HOFER         | AUT |
|                               | Norbert KUCERA          | AUT |
|                               | Reinhard LEROCH         | AUT |
|                               | Rudolf PUNTINGER        | AUT |
|                               | Robert SAX              | AUT |
| Chief Time Keeper:            | Daut DAMARIJA           | HRV |
| Competitor relations officers | see Appendix III        |     |
| Press Officer:                | Armin HOLENIA           | AUT |
| Deputy Press Officer:         | Wolfgang NOVAK          | AUT |
| Chief Safety Officer:         | Christian GRÜNWALD      | AUT |
| Deputy Safety Officer:        | Bernhard KLOIBER        | AUT |
| Track Safety Officer:         | Helmut PLACH            | AUT |
| Medical Coordination:         | MSS (Wilhelm MAGRITZER) | AUT |
| Chief Medical Officer:        | Dr. Dietmar ZOTTER      | AUT |
| Deputy Chief Medical Officer: | Dr. Simone HOLLOMEY     | AUT |
| Results Processing:           | DELTA TIMING            | HRV |
| Medical corps                 | ASBÖ                    |     |

Judge of Facts: Markus Zelenka, Otto Kainz, Joe Rittner, Leo Geyer.

Additionally all Safety Marshals, Radio Posts and Timekeepers appointed as Judge of Facts during the Event.

## 2.8 Location of Headquarters

|        |   |                     |
|--------|---|---------------------|
| place: | Rallye-Center, Auditorium Schloss Grafenegg, A-3485 Grafenegg |                     |
| phone: | +43 2735 399 48 (during opening times)                        |                     |
| date:  | WED 16. November 2016   | time: 16:00 – 20:00 |
|        | THU 17. November 2016   | 09:00 – 21:30       |
|        | FRI 18. November 2016   | 08:00 – 22:30       |
|        | SAT 19. November 2016   | 06:30 – 21:30       |

## 2.9 Location of Official Notice Board (ONB)

|        |   |  |
|--------|---|--|
| place: | Rallye-Center, Auditorium Schloss Grafenegg, A-3485 Grafenegg |  |
| date:  | see Art.2.8   |  |
| time:  | see Art.2.8   |  |

Virtual notice board (VNB): <http://noticeboard.rallye-waldviertel.at>

## 2.10 Press & Media Center

|                      |   |                               |
|----------------------|---|-------------------------------|
| FR 18. November 2016 | Rallye-Center, Auditorium Schloss Grafenegg, A-3485 Grafenegg | 08:00 – 12:00 / 18:00 – 22:00 |
| FR 18. November 2016 | VAZ St.Pölten 3100 St. Pölten Kelsengasse 9,                  | 12:00 - 18:00                 |
| SA 19. November 2016 | Rallye-Center, Auditorium Schloss Grafenegg, A-3485 Grafenegg | 07:15 – 21:30                 |

**2.11 Park Fermé**      **FRI 18.11. & SA 19.11.2016**      Schloss Grafenegg, A-3485 Grafenegg,

**2.12 Service Park**

|                               |  |
|-------------------------------|--|
| <b>THU 17.11.2016 (15:00)</b> | Schloss Grafenegg, A-3485 Grafenegg,       |
| <b>FRI 18.11.2016</b>         | VAZ St.Pölten, Kelsengasse 9 (11:00-17:00) |
| <b>FRI 18.11.2016</b>         | Schloss Grafenegg, A-3485 Grafenegg,       |
| <b>SAT 19.11.2016</b>         | Schloss Grafenegg, A-3485 Grafenegg,       |

## 3. PROGRAM

Entries open upon publication of these regulations

|                  |  |
|------------------|--|
| <b>Tuesday</b>   | <b>1. November 2016</b>  |
| 24:00            | Entries close ERT & ORM (except Iberian Trophy)  |
| <b>Friday</b>    | <b>4. November 2016</b>  |
| 15:00            | last date for original entry form send to organizer (not necessary for online entry)   |
| <b>Tuesday</b>   | <b>8. November 2016</b>  |
| 24:00            | list of accepted entries published, webpage update entries from Iberian Trophy on 15.11.   |
| <b>Sunday</b>    | <b>13. November 2016</b>   |
| 24:00            | entries close for Iberian Trophy   |
| <b>Wednesday</b> | <b>16. November 2016</b>   |
| 16:00 – 20:00    | Rally HQ open  |
| 16:30 – 20:00    | free distribution of the road book & free admin checks   |
| <b>Thursday</b>  | <b>17. November 2016</b>   |
| 07:00 – 20:00    | reconnaissance (details see Art. 9 & Appendix II)  |
| 09:00 – 21:30    | Rally HQ open  |
| 09:00 – 12:00    | distribution of the road book & free admin checks  |
| 14:30 – 20:30    | administrative checks, HQ  |
| 15:00            | opening Service Park Grafenegg   |
| 17:30 – 22:00    | scrutineering sealing & marking of components  |
| 18:00 – 22:30    | Scrutineering<br>Place: Nutzfahrzeuge Auer<br>Gewerbestraße 12, 3494 Gedersdorf  |
| <b>Friday</b>    | <b>18. November 2016</b>   |
| 07:00 – 09:00    | reconnaissance (details see Art. 9 & Appendix II)  |
| 08:00 – 22:30    | Rally HQ open  |
| 08:00 – 08:30    | additional scrutineering (cars with *)   |
| 09:00 – 10:30    | Shakedown / Test SS Engabrunn  |
| 08:00 – 12:00    | (18:00 - 22:00) Media-Center Grafenegg open / Media Accreditation, HQ  |
| 12:00 – 18:00    | Media-Center VAZ St.Pölten open / Media Accreditation  |
| 10:00            | 1st Stewards Meeting, HQ   |
| 10:30            | publication of start list for Leg 1, HQ-ONB / Web-VNB  |
| 11:00 – 17:00    | Service area VAZ St.Pölten open  |
| 12:15 – 12:30    | pre start press conference VAZ St.Pölten, Hall C   |
| 12:30 – 12:45    | Drivers briefing   |
| <b>13:00</b>     | <b>Start of the Rally, Podium Rathausplatz St.Pölten</b>   |
| 21:45            | Finish of Leg 1, last car in Park fermé  |
| 22:00            | publication of start list for Leg 2 HQ-ONB / Web-VNB   |
| <b>Saturday</b>  | <b>19. November 2016</b>   |
| 6:30 – 21:30     | Rally HQ open  |
| 7:15             | start of Leg 2, Park fermé OUT Grafenegg   |
| 7:15 – 21:30     | Media-Center Grafenegg open, HQ  |
| 19:15            | finish Podium & Price Giving,  |
| 19:30            | entrance to Parc Ferme   |
| 19:35            | final Scrutineering<br>place: Nutzfahrzeuge Auer<br>Gewerbestraße 12, 3494 Gedersdorf  |
| 20:45            | publication of Prov. Final Classification, HQ - ONB / Web-VNB  |
| 21:15            | publication of Final Official Classification, HQ - ONB / Web-VNB   |
| 21:30            | price giving ceremony REITSCHULE   |
| Abbreviations:   | HQ = Rally Headquarters Auditorium Grafenegg<br>ONB = Official notice board Rally Headquarters Grafenegg<br>VNB = Virtual notice board <a href="http://noticeboard.rallye-waldviertel.at">http://noticeboard.rallye-waldviertel.at</a> |

## 4. ENTRIES

### 4.1. Closing date for entries

Tuesday 1. November 2016, 24:00 except competitors from Iberian Trophy  
 Sunday 13. November 2016, 18:00 only for competitors from Iberian Trophy

### 4.2. Entry procedure

4.2.1 Everybody who wants to take part at the 2016 Rally Waldviertel must fill in the online entry form duly completed on <http://www.rallye-Waldviertel.at>. The entrant can use also the paper registration form and send the entry form by post. If the competitor is not a driver, the entry form must be accompanied by a copy of the valid competitors licence.

#### 4.2.2 Electronic registration form

Registering online the entrant has to fill in duly the entry form published on “[www.rallye-waldviertel.at](http://www.rallye-waldviertel.at)”. The determining figure when registering online is the date and the time of sending the web form. The original form must reach the organizer not later than 5 days after the closing date of entries. (except online entries)

#### 4.2.3 Postal registration

When registering via paper registration form, it has to be duly completed and sent to the permanent Rally office (address details: see article 2.3). In that case the acceptance date of entry will be the receipt date in the Rally Office.

#### 4.2.4 Codriver details can be announced until the start of administrative checks

4.2.5 The entry will only be accepted if accompanied by the total amount of the entry fee. Confirmation of payment must be sent by e-mail (a scanned copy of bank documents) to the rally secretariat at least one week after closing entry.

4.2.6 A successful registration will be confirmed by e-mail. The current registration status can be checked at <http://www.rallye-waldviertel.at> on the online entry system.

### 4.3. Number of entrants accepted and classes

4.3.1 The maximum number of entries accepted is 100.

### FIA Classes / GROUPS (European Rally Trophy 2016)

|             |   |
|-------------|---|
| <b>RC 2</b> | S2000-Rally: 1.6T engine with a 28mm restrictor<br>S2000-Rally: 2.0 Atmospheric<br>Group R5 (VR5)<br>Group NR4 over 2000cc (current N4)   |
| <b>RGT</b>  | RGT cars  |
| <b>RC 3</b> | Group A over 1600cc and up to 2000cc<br>Super 1600<br>R2 (atmo over 1600cc and up to 2000cc – VR2C and turbo over 1067cc and up to 1333cc – VR2C)<br>R3 (atmo / over 1600cc and up to 2000cc – VR3C and turbo over 1067cc and up to 1333cc – VR3C)<br>R3 (turbo / up to 1620cc / nominal – VR3T)<br>R3 (diesel / up to 2000cc / nominal – VR3D) |
| <b>RC 4</b> | Group A up to 1600cc<br>R2 (atmo over 1390cc and up to 1600cc – VR2B and turbo over 927cc and up to 1067cc – VR2B)<br>Kit-car up to 1600cc<br>Group N over 1600cc and up to 2000cc  |
| <b>RC 5</b> | Group N up to 1600cc<br>R1 (atmo up to 1600cc - VR1A/VR1B and turbo up to 1067cc - VR1A/VR1B)   |

**Specification:** - Cars homologated as Kit cars, where the capacity is between 1400 and 1600cc, may be accepted if they also comply with Article 255-6.2 “Weight” of Appendix J. - Two-wheel drive cars equipped with a supercharged diesel engine with a nominal cylinder capacity of less than 2000cc are accepted in Groups A and N. - For drivers entered with a Super 2000-Rally car complying with Art. 255A, it will be possible to use lapsed errata without any penalty. - For Super 1600 homologated cars, it will be possible to use lapsed errata without any penalty. See also variations in each region. - A FIA technical passport is NOT mandatory for S2000, R5, Super 1600 and RGT cars. Using FIA-approved head restraint (FHR) is obligatory for all FIA classes and is also permitted to start for national cars in the classes 9-12. Using FIA-approved head restraint (FHR) see national regulations on [www.osk.or.at](http://www.osk.or.at)

Only qualified teams from the ERT Zones counting for the FINAL EVENT OF EUROPEAN RALLY TROPHY 2016 the entries in classes RC 2-5 counting if applicable also to the ORM & ORC 2016. All teams from classes RC2-5 have to respect the regulations from the FIA RRSR 2016 including the tyre specifications and the use of FIA HOMOLOGATED TYRES. If the car is national homologated or the team using national tyres please choose the national classes 2-11

## NATIONAL Classes / GROUPS

|            |   |
|------------|---|
| <b>2</b>   | WRC 1,6 & 2,0 Turbo<br>S2000-Rally: 1.6T engine with a 28mm restrictor<br>S2000-Rally: 2.0 Atmospheric<br>Group R5 (VR5)<br>Group NR4 over 2000cc (current N4) including R4   |
| <b>RGT</b> | RGT Cars<br>RGT OSK National  |
| <b>3</b>   | Group A over 1600cc and up to 2000cc<br>Super 1600<br>R2 (atmo over 1600cc and up to 2000cc – VR2C and turbo over 1067cc and up to 1333cc – VR2C)<br>R3 (atmo / over 1600cc and up to 2000cc – VR3C and turbo over 1067cc and up to 1333cc – VR3C)<br>R3 (turbo / up to 1620cc / nominal – VR3T)<br>R3 (diesel / up to 2000cc / nominal – VR3D) |
| <b>4</b>   | Group A up to 1600cc<br>R2 (atmo over 1390cc and up to 1600cc – VR2B and turbo over 927cc and up to 1067cc – VR2B)<br>Kit-car up to 1600cc<br>Group N over 1600cc and up to 2000cc  |
| <b>5</b>   | Group N up to 1600cc<br>R1 (atmo up to 1600cc - VR1A/VR1B and turbo up to 1067cc - VR1A/VR1B)   |
| <b>6</b>   | „Historic Rally National“ requirements of Historic OSK Championship (WK 1-6)  |
| <b>7</b>   | 7.1 R4 (VR4) Group N over 2000ccm<br>7.2 Cars of the Group HA, HN +2500 ccm (4WD & 2WD)<br>7.3 Cars of the Group A, N, HA, HN -2500 ccm (4WD & 2WD)<br>7.4 Cars of the Group A, N, HA, HN -1600 ccm (4WD & 2WD)<br>7.5 WRC Cars with expired Homologation & GT-DMSB 2016  |
| <b>8</b>   | „Historic Rally National“ requirements of Historic OSK Cup (WK 1-8)   |
| <b>9</b>   | Serial cars M1 (according OSK-Reglements for Serial cars)   |
| <b>10</b>  | Alternative fuel cars   |
| <b>11</b>  | Cars of Group H (A/N) from ASN's of the FIA Zone Zentraleuropa (CEZ), which can not be classified in the classes 7.2 -7.4. This class is not counting for ORM & OSK Cups and open only for foreign drivers.   |

### 4.4. Entry fee

#### 4.4.1 Entry fee with optional Organizers advertising, including 60 m2 service space

|                              |             |   |
|------------------------------|-------------|---|
| Competitors of FIA ERT Final | Fee € 600.- | applies only for qualified teams of the FIA ERT Zones place 1-3 |
| FIA ERT Classes RC2-RC5      | Fee € 700.- |   |
| Classes 2-5, & 7.1           | Fee € 800.- |   |
| all other classes            | Fee € 650.- |   |
| Juniors                      | Fee € 550.- |   |

#### 4.4.2

Entry fee without optional Organizers advertising for each class is EURO 1.500.-

#### 4.4.3 Entry fee package

| printed material | piece | Eventpass | piece                   |
|------------------|-------|-----------|-------------------------|
| Road Book        | 1     | Driver    | 2 ID cards              |
| Rallycard        | 1     | Service   | 3 ID cards              |
| Rally Program    | 1     | Guests    | 2 Rallypass / Wristband |

| Recce pass    | piece                         |
|---------------|-------------------------------|
| recce card    | 1 (including in the Roadbook) |
| recce sticker | 2 (numbers for side windows)  |

#### additional fees:

|   |                      |
|---|----------------------|
| add. Service per squaremeter                  | € 5--/m <sup>2</sup> |
| Roadbook                                      | € 20--/ piece        |
| Wristband                                     | € 10--/piece         |
| (for servicearea and Rally Spectators points) |                      |
| STICKER SERVICE A or B                        | € 50-- / piece       |
| STICKER AUXILIARY                             | € 30--/ piece        |

## Stickerset (Set) consisting of:

|                      |  |
|----------------------|--|
| Advertising stickers | see appendix IV                            |
| Service A            | 1 (access service Grafenegg)               |
| Service B            | 1 (access service Grafenegg & VAZ)         |
| Start No.            | 2 (for both doors) see app. IV advertising |
| Start No.            | 2 (for rear side windows, orange / yellow) |
| Start No.            | 1 (for rear window, orange/yellow)         |
| Event Sticker        | 1 (rally plate for bonnet)                 |

## 4.5. Payment details

Via bank transfer to:

|                    |   |
|--------------------|---|
| <b>Account:</b>    | <b>Helmut Schöpf / Waldviertel Rallye</b> |
| <b>Bank:</b>       | <b>RAIFFEISENBANK ST.PÖLTEN</b>           |
| <b>IBAN-Code:</b>  | <b>AT143258500104406930</b>               |
| <b>Swift-Code:</b> | <b>RLNWATWWOBG</b>                        |

All crews shall pay the entry fee in EURO to the account above using the BIC / SWIFT (IBAN) code . The name of the Rally and the driver as the variable symbol must be given to identify the payer. A payment receipt or declaration must be sent to the organizer together with filled-in entry form.

## 4.6. Refunds of entry fee

Entry fee will be refunded in full:

- to the candidates whose entry has not been accepted.
- in case of rally doesn't take place.

Partial refund of entry fees:

The Organizer may refund 50% of the entry fee to those competitors who were unable to start the rally for reasons of "force majeure" (duly certified by their ASN before the Scrutineering, see also: art. 68 ISC). The application for a refund must be submitted in writing to the Organizers email address, stating the reason for not starting by the 21 July (administrative checks). Bank account details must be included. Entry fees of registered crews which are not present at the start of the rally without reasonable excuse will not be refunded.

## 5. INSURANCE

Licence holder of Austrian-OSK driver licence are insured up to a sum of € 20.000,- in case of accidental death , € 25.000,- in case of permanent disability, € 18.000,- for medical expenses and € 10.000,- for expenses of transportation. The organizer declines following mandatory insurance required by the licensing authorities:

### 5.1 Group accident insurance

Casualty insurance accordingly OSK standard insurance: This insurance will be concluded for all people within the rally organisation (especially officials) and co-drivers (special stages) and drivers with a foreign driver licence, provided that there is no casualty insurance concluded by an local or foreign insurance company. Coverage will be limited to following amount:

€ 15.000,- for death

€ 15.000,- for permanent disability

€ 10.000,- for expenses of transportation

### 5.2 Organizer Liability Insurance:

Organizer will cover an organisation liability insurance accordingly OSK standard insurance which covers a sum up to € 5.000.000,- for bodily and material damages. Damages of property are covered up to € 20.000,- within above sum. This legal liability insurance covers all damages on shakedown and special stages for all competitors. Service-, recce- and auxiliary-vehicles are excluded from the organisation liability cover insurance.

A Legally liability insurance is mandatory for all cars taking part in the rally and has to be contracted by the owner of the car. This legal liability insurance has to cover all damages on all routes except shakedown and special stages . The existance of this legally insurance has to be proofed at the administrative checks. All crews must submit their international Green Card at administrative check. Without this card the crew won't be permitted to start.

Auxiliary vehicles, cars dedicated to reconnaissance and vehicles with special labels issued by the organizer are not covered by the provided rally insurance and those are always on their own responsibility.



In case of an accident with only material damage, the competitor is committed to report immediately at the next time control and in a detailed report in writing at the end of the leg at the rally HQ. Lack of declaration of material damage will be fined with € 500,00. Furthermore **in case of physical damage, the driver must immediately inform the chief safety officer over the event emergency number 0676 532 51 58 and have to stay on the place.** After the event detected violations of this provision are reported to the FIA/OSK.

## **6. ADVERTISING & IDENTIFICATION**

Competitors will be required to carry mandatory rally identification plates and competition numbers during the whole rally. Those will be provided by the Organizers and must be affixed to the car prior to scrutineering and maintained during the whole event as specified in 2016 FIA Regional Rally Championships Sporting Regulations and according to Appendix IV of these regulations.

Drivers and Co-Drivers names on rear side windows have to appear according art 19 FIA RRSR;

Names on national & historic cars have to correspond with App. K of FIA/ OSK Regulations.

Punishes violations are as follows from the Clerk of the course:

Missing start number: fine: € 100  
Missing organizer optional advertising: Surcharge full entry fee Art. 4.4.2

## **7. RIMS & TYRES**

7.1 Tyres specified for use during the rally:

7.1.1 There is no maximum quantity of tyres to be used. All used tyres must be readily available commercially and must correspond with FIA-RRSR 2016 Article 60 and Appendix "V".

7.1.2 During the event on the public roads the minimum tread pattern of the tyre must be 1,6mm. Only tread pattern tyres approved for use on public roads having the "E" or "DOT" homologation or tyres according to the FIA RRSR or OSK RSR 2016 Appendix "V" must be used.

7.1.3 Tyres for national classes (6-12)

Tyres for national classes see OSK RRSR Article 60

7.1.4 Tyre handcutting

Cutting of tyres is in all FIA classes strictly forbidden.

7.1.5 Tyre Marking

After the start of the rally and on all Service exits is a Tyre marking zone. Marking of the tyre will be made in this area by scrutineers of the OSK. The control of these markers is performed random basis throughout the course of the rally route.

## **8. FUEL**

All competitors have to use unleaded fuel and Diesel according FIA Appendix J 252.9

Competitors of national classes additionally: E85 Ethanol, CNG (compressed natural Gas) or LPG (Liquefied Petroleum Gas).

8.1 All competitors may only refuel in the refuelling zone. There will be one refuelling zone after the Service Park exit.

It is forbidden to use the competition car for transportation of fuel and personnel between Service Park and refuelling. To access the refuelling zones for each Service crew member (maximum of 2) fireproof protection clothing is required. Entry in Refuel zones only with the identification ID-Card "Service" (provided with the service pack).

8.2 Procedure at commercial filling stations

Drivers may use commercially available pump fuel dispensed from pumps at commercial Filling stations or from organizer distribution points, marked in the road book. This fuel must be dispensed directly in to the tank of the competing car. The crew must use only the equipment on board and only the pumps with no external physical assistance. Cars equipped only with FIA-specified refuel couplings and using fuel from commercial fillings stations must transport the adaptor in the car and show it at the pre-event scrutineering.

8.2.1 Only Teams of national classes are permitted using own fuel for refuelling at public fuel stations along the official rally route, taking into compliance of the OSK rally regulations.

## **9. RECONNAISSANCE**

### 9.1 Procedure for registration

Before the beginning of reconnaissance each crew announces the factory make and the registration plate number of its reconnaissance car to the organizer. The crew receives identification for its car (starting number) and a reconnaissance time card. Starting number must be affixed on the front and back windows and kept visible for the duration of the reconnaissance period. To monitor GPS Logger can be used by the organizer. After the reconnaissance the numbers have to be removed from the car. The reconnaissance card must be handed over to the organizer latest on Friday 18. November 12:45 hrs at the "VAZ St.Pölten, drivers briefing"

### 9.2 Reconnaissance time schedule

see Appendix II - Reconnaissance Schedule

### 9.3 Reconnaissance rules

The reconnaissance may only be carried out using production cars complying with specifications given in 2016 FIA RRSR Article 25.

#### 9.3.1 General Speed limit

During the reconnaissance crews must strictly observe the Austrian motoring rules, regulations and Traffic Code. Particularly they must respect general speed limit of 50 km/h in the built-up areas and 100 km/h outside it. The Police controls the rally route and punished any infringements. On specially marked positions in the Roadbook the maximum Speed is 60 or 30 km/h. Failure will be sanctioned see Art. 9.3.5

#### 9.3.2 Direction

Crews are forbidden to drive in opposite direction as to the special stages are defined, except of the route areas specified in the reconnaissance road book.

#### 9.3.3 Restriction of reconnaissance

Any presence of driver or co-driver on the route of special stages in period after the publication of these Supplementary Regulations shall be regarded as reconnaissance performed. Drivers and co-drivers, who enter the area used for Rally Waldviertel during that period must promptly inform the Clerk of the Course by phone (+43 664 413 29 15), except drivers living in that area or working there.

#### 9.3.4 Number of passages

Reconnaissance is restricted on 2 passes in one special stage, entering special stage at start and leaving on finish. For controlling a recce card will be distributed. Officials, nominated by the Clerk of the Course, will check and make markings in the recce card at start- finish- or individual points of the SS. Their controls will be identified by FIA signs for start- stop or passage Control. The crews must stop at these controls and present their recce card to officials.

#### 9.3.5 Speeding

According 2016 FIA RRSR Art. 20.2.2 speeding during reconnaissance will incur a fine applied by the clerk of the course as follows: per km per hour over the defined speed limit STVO or roadbook: all drivers per km/h over the limit € 25.-

## **10. ADMINISTRATIVE CHECKS**

### 10.1 Documents to be checked

The following will be checked at the administrative check:

- entrants license
- drivers and co-drivers competition licenses
- drivers and (co-drivers driving license only ERT)
- ASN authorisation for all foreign competitors
- driver and co-driver passports or identification
- completion of all details on the entry form
- documents and registration papers for the rally car
- insurance cover (third parties) for the rally car (green card)
- authorization waiver by the owner of the car if he is not one of the drivers

### 10.2 Location and timetable

place: Rallye-Center, Auditorium Schloss Grafenegg, A-3485 Grafenegg  
phone: +43 2735 399 48 (during opening times)

|       |                       |       |                                   |
|-------|-----------------------|-------|-----------------------------------|
| date: | WEN 16. November 2016 | time: | 16:30 – 20:00 (free admin checks) |
|       | THU 17. November 2016 |       | 09:00 – 12:00 (free admin checks) |
|       | THU 17. November 2016 |       | 14:30 – 20:30 (scheduled)         |

## 11. SCRUTINEERING, MARKING & SEALING

### 11.1 Location and timetable

**place:** Nutzfahrzeuge Auer, Gewerbestraße 12, 3494 Gedersdorf  
**date / time:** THU. 17. November 17:30 – 22:30 (detailed time schedule see entry confirmation)

#### 11.1.1 General:

For FIA classes only the FIA regulations apply to the car.  
For national classes the national technical regulations apply for the car.

11.1.2 The entered car may be presented at marking, sealing and scrutineering by a representative of the team. All Documents have to be full filled in. The car have to be ready for sealing, otherwise the car will be rejected.

#### 11.1.3 Documents to be checked

At scrutineering all competitors have to present following documents:

- rally car homologation form, sports card of a car (when specified)
- certificate for roll cage
- OSK technical card for rally car, (FULL FILLED IN)
- OSK card for safety equipment of driver and co-driver (FULL FILLED IN)
- SOS / OK plate A3
- FIA / OSK HTP for historic cars

#### 11.1.4 Sealing

Before scrutineering all the competition cars shall have a hole drilled through the engine block in minimal diameter of 2mm for applying the sealing wire situated on a visible spot (open bonnet).

### 11.2 Mud flaps: (Appendix J Article 252.7.7)

### 11.3 Windows: (Appendix J Article 253.11)

### 11.4 Driver's safety equipment

Every competitor has to show complete clothes, which will be used including helmets and FHR-system and filled in documents of safety equipment. Agreement will be checked with Article 3 appendix L ISC and with technical regulations of FIA / OSK.

### 11.5 Noise level

All cars must be equipped with a proper stable exhaust silencer according to the FIA regulations.

### 11.6 National technical regulations

#### 11.6.1 Exhaust catalyts

All cars must be obligatorily equipped with an efficient homologated exhaust catalytic converter. Any car with missing or incomplete catalyst at scrutineering will not be permitted to start. Any car with missing or incomplete catalyst noticed during the event will be reported to the Stewards.

## 12. OTHER PROCEDURES

### 12.1 Start of rally and starting order

#### 12.1.1 Start rally

The official start of the rally will be at TC 0 "Podium Rathausplatz St.Pölten" 17.11.2016 13:00

#### 12.1.2 Start order

General order: FIA/ERC priority drivers, ASN priority drivers, all other drivers classes.

For Leg 1: the starting order will be in numerical order every one minute. For Leg 2: the starting order will be according to the classification at the finish of leg 1 in consideration Art. 45 FIA RRSR 2016.

#### 12.1.3 Restart after retirement (Rally 2)

A competing car which fails to finish Leg 1 will be permitted to restart the next leg. See FIA RRSR 2016. However, the car must report to the overnight regroup prior to the next leg, not later than 1 hour before the scheduled start of the first car.

#### 12.1.4 Starting system of special stages except SP 1-4 and 10/12 "Super special stages & round course"

The electronic start device shall be clearly visible to the crew from the start line and will be displayed either as a countdown clock or a sequential light system. After filling in the time card the start marshal hands it back to the crew and points to the clock displaying hours, minutes and seconds.. The starting lines are equipped with photo cells (placed 40 cm after of the starting line) of the timekeeping instrument with print out device and coupled with the above mentioned system, registering false starts.

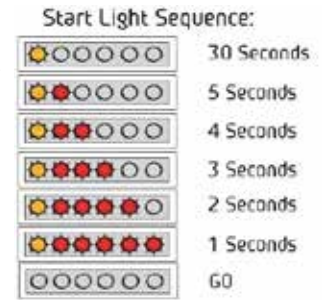
## MANUAL START PROCEDURE

In the event of having to use a manual start procedure after handing the time card back to the crew, the start marshal will count down aloud: 30" - 15" - 10" and the last five seconds one by one. When the last 5 seconds have elapsed, the starting signal shall be given.

### 12.1.4.1 Starting System for SS "RC" round course SS 1-4 & 10/12

Upon arrival at the start crews will have recorded estimated starting time into the time card.

The estimated starting time to SS is the starting time for the next section. After the marshal at start gives the crew the time card he will indicate the start lights. The lights will be red. Start to the SS will not be at given minute, but will be operated by a timekeeper bearing in mind the safety of the drivers. Crew will enter the SS when the signal light switches from red to green colour. The time to start is signaled by the light changing from red to green. The competing car must start within 5 seconds. In case of the start light's not working, the start will be given manual with flags.



12.1.4.2 At the "STOP" the actual start time for the following section and the special stage driving time will be entered in the time card.

12.1.4.3 Number of laps in "RC": Only the crews are responsible for driving the exact number of laps which are clearly indicated in the roadbook. In case of exceeding the number of laps the actual driving time will be counted. In case of less number of laps following time penalties will be assigned, For every stage or super special not completed correctly: 5 minutes.

However, should the first special stage or super special stage that is not correct completed:

- that run as Section 1 when followed by an overnight regroup before Section 2 or
- the last stage before an overnight regroup, the penalty will be 7 minutes.

This time penalty will be added to the fastest time of the driver's group for this stage.

### 12.1.4.4 Holdingzone / Warm up of cars

Before the start of the special stage 2 (TV Stage VAZ) is the scheme should be allowed between the TC 1b and the TC 2 to leave the zone to the vehicles to bring on operating temperature. The out and in entrance from the holdingzone has downstream from the south in the Spratzener Kirchenweg done in the field of ZK Service Out. The itinerary is free.

### 12.1.4.5 Activity during start of Super SS (SSS 2/4) :

Marshals with sign STOP are stopping the crews on their starting positions, which is approx. 5 meters before start light (RED/GREEN). On start the light is on RED. The marshals point to the start lights with HAND and then they move away. In approx. 5 seconds the GREEN light will light up and this is the start time for both crews. The green light is on all time of SS. In case of SS is cancelled the RED light will turn on. When is achieved a proper number of laps one of the marshals will wave with cecquered flag. In case of the starting lights failure, the start will be given in a similar manner using a flag as follows: 5 seconds before the start, the time-keeper will raise the flag slowly upwards and he will drop it down immediately at the moment of the start. Further on the provisions applicable to the FIA Regional Rally Championships stay in force. False starts will be detected by electronic system and will be penalized in accordance to the FIA Regional Rally Championships. The Maximum time of SSS 2 „RALLYSHOW“ is set to 3 Minutes. To knock over or to drive around the route marks(cones, barrels/drums etc.) on the wrong side or missing a pass will be penalised with a 10 second time penalty. The starting order on SS 2 is done from the first 50 participants in the reverse order to start number 1.

## 12.2 SHAKE DOWN

### 12.2.1 Eligibility

There are only allowed teams who have completed the administrative and technical scrutineering. Participation is (completely markings and advertising, clothing as competition, etc.) only in compliance with all rules of a special stage possible. On Shake-down only the crews may participate. Participation in the shakedown must be notified to the administrative checks. Driving from the shakedown is possible only to the logged-on time.

### 12.2.2 Place & Time Schedule of Shakedown

Place: Engabrunn

Date: 18.11.2016

Time: 09:00 – 10:30

### 12.3 PERMITTED EARLY CHECK-IN

Early check-in at the end of leg 1 (TC 4C) is permitted.

Early check-in at the end of the rally (TC 12D) is permitted.

### 12.4 ORM POWERSTAGE

For Competitors of the Austrian Rally Championship (ORM) the SS 12 „MANHARTSBERG II“ is defined according OSK-RSR Art.41.6 as ORM Powerstage.



## 12.5 CEREMONY AT THE FINISH

The Rally will finish in reverse order “minimum place 15 - 1” at the finish Podium. First three crews in general classification will follow the instructions of the Organizer for Prize Giving on the podium. After the finish Podium all crews are obliged to check in at TC park fermé.

## 12.6 ORGANISATION SERVICE PARKS

12.6.1 Service Park “Grafenegg” and Service VAZ will be open according to the programme. The entry fee includes a Service area of 60 m<sup>2</sup> for all Competitors. In case of additionally needed Service area can be inquired at the Organizer when sending the entry form. For additional areas € 5,-/m<sup>2</sup> will be charged. The request for additional Service area has to be sent to Organizer at latest till entry close, see art. 3 Programme.. Entance to Service VAZ St. Pölten only for servicecars wirth plate „B“.

### 12.6.2 Equipment of service areas

The Service Park is equipped with garbage containers, these must always be used. A Tap is located in the Service Park. In Service Grafenegg is provided power only for a fee in a timely notification by the organizer. Costs of electricity production are the responsibility of the team and to be paid at the Administrative check. All requests concerning Service please send till latest 30. October via email to : [service@waldviertel-rallye.at](mailto:service@waldviertel-rallye.at) Info: Tel.: +43 664 415 18 89 oder +43 650 545 00 73

12.6.3 Two assistant cars (Service A and Service B) for each crew can enter the Service Park (see art.12.6.1)

12.6.4 The Maximum allowed speed allowed in the Service Park is 30 km/h

12.6.5 Catering in the Service Park: Self Service of food and beverages for drivers and Service crew is allowed. Retailing of food and beverages within the Service Park is absolutely forbidden. The using of liquid gas for cooking and heating ist absolutely forbidden in the service Park.

12.6.6 Behavior within the Service Park: Damages to the surface of the Service Park have to be avoided. Use of nails, screws or other fixing material on the tarmac surface in the ServicePark is not allowed. The competitor is responsible for any damages. Austrian environmental rules apply in accordance with the following:

- ground sheet must be used.
- no lasting and unavoidable damage may be caused in the Service Parks.
- unreasonable behaviour of teams, against the aim of environmental protection, harms the image of the motorsport will be punished even if there are no detailed regulations mentioned. After the rally the Service area has to be handed over in clean condition. The crews are responsible for waste disposal. Any offence against Service Park restrictions will be penalized up to € 300 applied by the Clerk of the Course. Heavy infringements will be reported to the Stewards.

## 12.7 Official time used during the rally:

The official time throughout the rally corresponds to the time signal sent out by phone under +43 810 00 15 03.

12.8 On-Board Cameras Art 65.1 FIA RRSR has to be respected.

## 12.9 Competitors safety/ Emergency number:

The general emergency number of the event is: +43 676 532 51 58 This number is by all teams mandatory in the mobile phone on the speed dial number 2 to store (for smart phones under favorites) to ensure emergency access easily and quickly. Compliance with this requirement can be checked during the event at any time! If the number is not stored, this will be reported to the Stewards and will be punished with € 250-. Are provided to the participants by the organizer sticker with the emergency number of the trade show, this on the passenger side and the vehicle outer side (windscreen, passenger side below) shall be placed clearly visible.

## 12.10 Drivers briefing

Before the rally a drivers meeting is conducted (see schedule). Driver or Co driver of a team are required to attend. Non-attendance a fine of EUR 100 shall be imposed by the clerk of the course.

## 13. IDENTIFICATION OF OFFICIALS

Officials of the event will be identified by official ID-cards and coloured tabards as follows:

|                               |   |
|-------------------------------|---|
| Chief of SS:                  | yellow tabard with text „SP-LEITER“                   |
| SS-Safety officer:            | yellow tabard with text „SP-SICHERHEITSOFFIZIER“      |
| Radio Marshall:               | yellow tabard with text „Funksicherung“ oder „Safety“ |
| Post chief                    | red tabbard with the text „post chief“                |
| Competitors Relation officers | yellow / pink tabard “CRO”                            |
| Safety Marshall:              | yellow tabard with text „Safety“                      |
| Timekeeper:                   | yellow/orange tabards with text „Delta Timing“        |
| Press:                        | green tabard „ORM Logo“ TV / MEDIA                    |

## 14. CLASSIFICATION AND PRICES

### 14.1. Classification

#### 14.1.1 Classification of the FIA European Rally Trophy / CEZ Historic / ORM & Cups

|                               |                            |           |                              |
|-------------------------------|----------------------------|-----------|------------------------------|
| Overall ERT                   | „awarded on finish Podium“ | Place 1-3 | Cup for Driver and Co-Driver |
| Overall ORM                   | „awarded on finish Podium“ | Place 1-3 | Cup for Driver and Co-Driver |
| Overall ORM 2WD               | „awarded on finish Podium“ | Place 1-3 | Cup for Driver and Co-Drive  |
| Classes (2-5)                 | „price giving „Reitschule“ | Place 1-3 | Cup for Driver and Co-Drive  |
| ORC Div. 1/2/3/4/5            | „price giving „Reitschule“ | Place 1   | -”-                          |
| Classes (9-11)                | „price giving „Reitschule“ | Place 1-3 | Cup for Driver and Co-Drive  |
| HRM & HRC overall             | „price giving „Reitschule“ | Place 1-3 | Cup for Driver and Co-Drive  |
| HRM / HRC each WK             | „price giving „Reitschule“ | Place 1-3 | Cup for Driver and Co-Drive  |
| Niederösterreich Rallytrophie | „price giving „Reitschule“ | Place 1-3 | Cup for Driver and Co-Drive  |
| Junior ORM                    | „price giving „Reitschule“ | Place 1-3 | Cup for Driver               |

Cupps for place 1-3 will be only awarded if at least 5 crews compete in set classification (group, class, cup). Should the number be lower, only the prize for the 1st place will be awarded.

#### FIA PRICES: „price giving „Reitschule“

|  |           |                              |
|--|-----------|------------------------------|
| FIA European Rally Trophy for Driver and Co-Driver (FIA ERT) | Place 1-3 | Cup for Driver and Co-Driver |
| FIA ERT 2 Trophy (ERT2) for Driver and Co-Driver             | Place 1-3 | Cup for Driver and Co-Drive  |
| FIA ERT 3 Trophy (ERT3) for Driver and Co-Driver             | Place 1-3 | Cup for Driver and Co-Drive  |
| FIA ERT Junior Trophy (ERTJ) for Driver                      | Place 1-3 | Cup for Driver               |

14.1.2 The results will be published in accordance with the FIA European Rally Trophy 2016 and the Austrian Rally Championship & OSK Rally Cups 2016.

14.2 Prices: The Prices for ERT place 1-3 and overall winners 1-3 see Art. 14.1.1, will be awarded at the finish Podium ceremony regarding the unofficial classification list after SS 12. The ownership will be confirmed after the publishing of the official final results.

## 15. FINAL CHECKS & PROTESTS

### 15.1 Final Checks

Complete final check for assigned rally cars will be used by written notification from CoC immediately after passing the finish TC parc ferme in. For each car at the final scrutineering a representative of the team, a maximum of two mechanics and possibly one driver must be present. The selected cars for final scrutineering will be escorted from the park fermé to the final scrutineering.

#### Final scrutineering

place: Nutzfahrzeuge Auer, Gewerbestraße 12, 3494 Gedersdorf  
 date/time: SAT 19. November 1st car 19:35 hrs

### 15.2 Protest fee:

International (FIA) € 1.000.-  
 National (ASN) € 250.-

If the protest requires the dismantling and the reassembly of different parts of a car, the claimant must pay an additional deposit which will be determined by the Stewards of the Meeting.

### 15.3 Appeal fee:

International (FIA): € 6.000.-  
 National (ASN): € 800.-

Helmut Schöpf / COC



## APPENDIX I - ITINERARY - 1st LEG

| Itinerary-Zeitplan   |   | Rallye Waldviertel 2016 |               |              |              |                 |
|--|---|-------------------------|---------------|--------------|--------------|-----------------|
| Leg 1 / Etappe 1   |   | Sunrise 07:14           |               | Sunset 16:11 |              | FRIDAY 18/11/16 |
| TC   | Location  | SS-dist.                | Liasion-dist. | Total-dist.  | Target time  | First car due   |
| 0  | <b>Start "St. Pölten Rathausplatz"</b>  |                         |               |              |              | <b>13:00</b>    |
| 1  | Teufelhof   |                         | 3,30          | 3,30         | 17           | 13:17           |
| <b>SS 1</b>  | <b>SS St.Pölten I</b>   | <b>13,44</b>            |               |              |              | <b>13:20</b>    |
| 1A   | VAZ SERVICE IN "Kelsengasse"  |                         | 2,80          | 16,24        | 25           | 13:45           |
| <b>Service A "VAZ"</b>   |   | <b>13,44</b>            | <b>6,10</b>   | <b>19,54</b> | <b>00:15</b> |                 |
| 1B   | Service <b>OUT</b> Holding Zone <b>IN</b> "VAZ " (set starters in reverse order)            |                         |               |              |              | 14:00           |
| 2  | Vorstart VAZ  |                         | 0,05          | 0,05         | 62           | 15:02           |
| <b>SS 2</b>  | <b>TV SSS RALLYESHOW</b> (max. Starters for TV in reverse order)                            | <b>1,20</b>             | <b>0,05</b>   | <b>1,25</b>  |              | <b>15:05</b>    |
|  | Holding zone VAZ b "set to normal start order"  |                         |               |              | <b>90</b>    | 90 min. live TV |
| 2A   | Holding Zone VAZ OUT  |                         | 0,10          | 0,10         | 30           | 17:05           |
| 3  | Teufelhof   |                         | 1,58          | 1,58         | 12           | 17:17           |
| <b>SS 3</b>  | <b>SS St.Pölten II</b>  | <b>13,44</b>            |               |              |              | <b>17:20</b>    |
| 4  | Vorstart VAZ  |                         | 2,95          | 16,39        | 37           | 17:57           |
| <b>SS 4</b>  | <b>SSS RALLYESHOW II</b>  | <b>1,20</b>             |               |              |              | <b>18:00</b>    |
| 4A   | Holding- Interviewzone "VAZ" <b>OUT</b>   |                         | 0,05          | 1,25         | 10           | 18:10           |
| 4B   | Technical Zone FLEXI SERVICE IN "Grafenegg"   |                         | 39,72         | 39,72        | 50           | 19:00           |
| <b>Service B "Flexi Service Grafenegg"</b>                                     |   | <b>15,84</b>            | <b>44,50</b>  | <b>60,34</b> | <b>01:15</b> |                 |
| 4C   | Service <b>OUT</b> Parc Ferme <b>IN</b> "Grafenegg" Freie Einfahrt / early check in allowed |                         |               |              |              |                 |
| <b>All Cars (except re-starting Crews) must be in Parc Ferme no later than</b> |   |                         |               |              |              | <b>21:45</b>    |
| <b>Etappe 1 - Etappe 1 totals</b>  |   | <b>29,28</b>            | <b>50,60</b>  | <b>79,88</b> |              |                 |

Section 1

### OVERNIGHT PARC FERME GRAFENEGG

| SERVICE INFORMATION            | VAZ St.Pölten | Grafenegg | Day 1    | Day 2    |
|--------------------------------|---------------|-----------|----------|----------|
| A                              | 15 min.       |           | 1        |          |
| B                              |               | 75 min.   | 1        |          |
| C                              |               | 15 min.   |          | 1        |
| D + F                          |               | 30 min.   |          | 2        |
| E                              |               | 60 min.   |          | 1        |
| G                              |               | 10 min.   |          | 1        |
| <b>TOTAL SERVICE OCCASIONS</b> |               |           | <b>2</b> | <b>5</b> |

### SPECIAL STAGES

| SP / SS Information FR 18. Nov.            | SS km | Gravel       | Tarmac       | Total        | Info             |
|--|-------|--------------|--------------|--------------|------------------|
| <b>SS "RK" St.Pölten</b>                   | 13,44 | 8,12         | 5,32         | 26,88        | parts ident 2015 |
| <b>TV Stage - Rallye Show Sankt Pölten</b> | 1,20  | 0,30         | 0,90         | 2,40         | parts ident 2015 |
|  |       | 16,84        | 12,44        | <b>29,28</b> |                  |
|  |       | <b>57,51</b> | <b>42,49</b> | <b>%</b>     |                  |

| SP / SS Information SA 19. Nov.  | SS km | Gravel | Tarmac | Total | new        |
|----------------------------------|-------|--------|--------|-------|------------|
| <b>SS Kronsegg-Gföhl</b>         | 7,60  | 6,68   | 0,92   | 15,20 | ident 2015 |
| <b>SS GH Staar-Wolfshoferamt</b> | 24,37 | 12,88  | 11,49  | 48,74 | ident 2014 |

|                             |       |              |              |               |            |
|-----------------------------|-------|--------------|--------------|---------------|------------|
| <b>SS Langenlois</b>        | 12,56 | 2,85         | 9,71         | 25,12         | new        |
| <b>SS "RK" Manhartsberg</b> | 22,55 | 16,70        | 5,85         | 45,10         | ident 2015 |
|                             |       | <b>78,22</b> | <b>54,10</b> | <b>134,16</b> |            |
|                             |       | <b>58,30</b> | <b>41,70</b> | <b>%</b>      |            |

| SS Information totals | SS km         | Gravel       | Tarmac       | Rally total   |
|-----------------------|---------------|--------------|--------------|---------------|
|                       | <b>163,44</b> | <b>95,06</b> | <b>68,38</b> | <b>420,65</b> |
|                       |               | <b>58,16</b> | <b>41,84</b> | <b>%</b>      |

## APPENDIX I - ITINERARY - 2nd LEG

| Itinerary-Zeitplan                |   | Rallye Waldviertel 2016 |                |               |                     |                   |
|-----------------------------------|---|-------------------------|----------------|---------------|---------------------|-------------------|
| Leg 2 / Etappe 2                  |   | Sunrise 07:15           |                | Sunset 16:11  |                     | SATURDAY 19/11/16 |
| TC                                | Location                                    | SS-dist.                | Liasion-dist.  | Total-dist.   | Target time         | First car due     |
| 4D                                | <b>Parc-Ferme Grafenegg OUT Service IN</b>  |                         |                |               |                     | <b>07:15</b>      |
| <b>Service C "Grafenegg"</b>      |   |                         |                |               | <b>00:15</b>        |                   |
| 4E                                | Service <b>OUT</b> "Grafenegg"              |                         |                |               |                     | 07:30             |
| <b>RZ 1</b>                       | Tankzone / Refuel all Competitors           |                         |                |               |                     |                   |
|                                   | Distance to next Refuel                     | 31,97                   | 57,73          | 89,70         |                     |                   |
| 5                                 | Kronsegg                                    |                         | 17,53          | 17,53         | 27                  | 07:57             |
| <b>SS 5</b>                       | <b>SS Kronsegg-Gföhl I</b>                  | <b>7,60</b>             |                |               |                     | <b>08:00</b>      |
| 6                                 | GH Staar                                    |                         | 10,20          | 17,80         | 27                  | 08:27             |
| <b>SS 6</b>                       | <b>SS GH Staar-Wolfshoferamt I</b>          | <b>24,37</b>            |                |               |                     | <b>08:30</b>      |
| 6A                                | Regroup IN                                  |                         | 30,00          | 54,37         | 60                  | 09:30             |
| <b>Regroup Schloss Grafenegg</b>  |   |                         |                |               | <b>30</b>           |                   |
| 6B                                | Regroup OUT / Service IN                    |                         |                |               |                     | 10:00             |
| <b>Service D "Grafenegg"</b>      |   | <b>31,97</b>            | <b>57,73</b>   | <b>89,70</b>  | <b>00:30</b>        |                   |
| 6C                                | Service <b>OUT</b> "Grafenegg"              |                         |                |               |                     | 10:30             |
| <b>RZ 2</b>                       | Tankzone / Refuel all Competitors           |                         |                |               |                     |                   |
|                                   | Distance to next Refuel                     | 31,97                   | 57,73          | 89,70         |                     |                   |
| 7                                 | Kronsegg                                    |                         | 17,53          | 17,53         | 27                  | 10:57             |
| <b>SS 7</b>                       | <b>SS Kronsegg-Gföhl II</b>                 | <b>7,60</b>             |                |               |                     | <b>11:00</b>      |
| 8                                 | GH Staar                                    |                         | 10,20          | 17,80         | 27                  | 11:27             |
| <b>SS 8</b>                       | <b>SS GH Staar-Wolfshoferamt II</b>         | <b>24,37</b>            |                |               |                     | <b>11:30</b>      |
| 8A                                | Regroup IN                                  |                         | 30,00          | 54,37         | 60                  | 12:30             |
| <b>Regroup Schloss Grafenegg</b>  |   |                         |                |               | <b>45</b>           |                   |
| 8B                                | Regroup OUT / Service IN                    |                         |                |               |                     | 13:15             |
| <b>Service E "Grafenegg"</b>      |   | <b>31,97</b>            | <b>57,73</b>   | <b>89,70</b>  | <b>01:00</b>        |                   |
| 8C                                | Service <b>OUT</b> "Grafenegg"              |                         |                |               |                     | 14:15             |
| <b>RZ 3</b>                       | Tankzone / Refuel all Competitors           |                         |                |               |                     |                   |
|                                   | Distance to next Refuel                     | 35,11                   | 45,20          | 80,31         |                     |                   |
| 9                                 | Langenlois                                  |                         | 10,50          | 10,50         | 17                  | 14:32             |
| <b>SS 9</b>                       | <b>SS Langenlois I</b>                      | <b>12,56</b>            |                |               |                     | <b>14:35</b>      |
| 10                                | Klein Burgstall                             |                         | 19,60          | 32,16         | 37                  | 15:12             |
| <b>SS 10</b>                      | <b>SS Manhartsberg I</b>                    | <b>22,55</b>            |                |               |                     | <b>15:15</b>      |
| 10A                               | Regroup / Technical Zone IN                 |                         | 15,10          | 37,65         | 45                  | 16:00             |
| <b>Regroup Schloss Grafenegg</b>  |   |                         |                |               | <b>25</b>           |                   |
| 10B                               | Regroup OUT / Service IN                    |                         |                |               |                     | 16:25             |
| <b>Service F "Grafenegg"</b>      |   | <b>35,11</b>            | <b>45,20</b>   | <b>80,31</b>  | <b>00:30</b>        |                   |
| 10C                               | Service <b>OUT</b> "Grafenegg"              |                         |                |               |                     | 16:55             |
| <b>RZ 4</b>                       | Tankzone / Refuel all Competitors           |                         |                |               |                     |                   |
|                                   | Distance to next Refuel                     | 35,11                   | 45,20          | 80,31         |                     |                   |
| 11                                | Langenlois                                  |                         | 10,50          | 10,50         | 17                  | 17:12             |
| <b>SS 11</b>                      | <b>SS Langenlois II</b>                     | <b>12,56</b>            |                |               |                     | <b>17:15</b>      |
| 12                                | Klein Burgstall                             |                         | 19,60          | 32,16         | 37                  | 17:52             |
| <b>SS 12</b>                      | <b>SS Manhartsberg II "POWERSTAGE"</b>      | <b>22,55</b>            |                |               |                     | <b>17:55</b>      |
| 12A                               | Holding Zone IN (sorting for finish-ramp)   |                         | 15,10          | 37,65         | 45                  | 18:40             |
| 12B                               | Holding Zone OUT -Service IN                |                         |                |               | 20                  | 19:00             |
| <b>Service G "Grafenegg"</b>      |   | <b>35,11</b>            | <b>45,20</b>   | <b>80,31</b>  | <b>00:10</b>        |                   |
| 12C                               | Service <b>OUT</b> "Grafenegg"              |                         |                |               |                     | 19:10             |
|                                   | <b>Finish Ramp Podium Service Grafenegg</b> |                         | 0,25           | 0,25          |                     | <b>19:15</b>      |
| 12D                               | <b>Parc Ferme IN GRAFENECC</b>              |                         | 0,50           | 0,50          | 20                  | 19:30             |
|                                   | Freie Einfahrt / early check in allowed     |                         |                |               |                     |                   |
| <b>Etappe 2 - Etappe 2 totals</b> |   | <b>134,16</b>           | <b>206,61</b>  | <b>340,77</b> |                     |                   |
| <b>TOTALS OF THE RALLY</b>        |   |                         |                |               |                     |                   |
|                                   |   | <b>SS</b>               | <b>Liasion</b> | <b>Total</b>  |                     |                   |
| Day 1 -                           | 4 SS  | 29,28                   | 50,60          | 79,88         |                     | 36,65%            |
| Day 2 -                           | 8 SS  | 134,16                  | 206,61         | 340,77        | % of Special Stages | 39,37%            |
|                                   |   | <b>163,44</b>           | <b>257,21</b>  | <b>420,65</b> |                     | <b>38,85%</b>     |

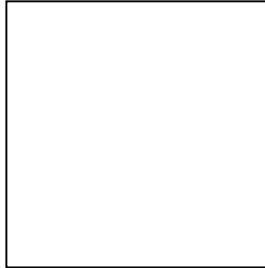




## APPENDIX III - COMPETITORS RELATION OFFICER

### KENNZEICHNUNG/ IDENTIFICATION/ IDENTIFICAZIONE:

Jacke mit der Aufschrift „CRO“ tabard bearing the inscription „CRO“ Casacca con la scritta „CRO“



|                          |                             |
|--------------------------|-----------------------------|
| .... (xx )               | <b>WERNER PFISTERER (A)</b> |
| Telefon Nr. / Phone no.: | Telefon Nr. / Phone no.:    |
| <b>+xx ...</b>           | <b>+43 664 161 76 76</b>    |
| .                        | pfisterer.werner@gmail.com  |

### ANWESEND / WILL BE PRESENT / È PRESENTE:

**Donnerstag / Thursday, 17. November 2016 17:00 bis 22:30 Uhr**  
 - bei der technischen Abnahme / at the scrutineering

**Freitag / Friday 18. November 2016**  
 08:00 bis 08:30 - Nachabnahme / Regrouping Zone Grafenegg  
 10:30 bis 11:00 - beim Aushang der Startliste / on the Notice Board  
 12:15 bis 12:45 - bei der Fahrerbesprechung  
 13:00 bis 14:30 - am Start zu Etappe 1 / at the start of Leg 1  
 14:45 bis 19:00 - Sammelzone Rallyeshow VAZ St. Pölten  
 20:15 bis 22:15 - Rallyleitung Grafenegg (Help desk)  
 - an der Einfahrt zum Parc fermé am Ende von Etappe 1  
 - at the entrance of the parc fermé at the end of Leg 1  
 21:30 bis 22:00 - Rally Center, Auditorium Grafenegg

**Samstag / Saturday 19. November 2016**  
 07:00 bis 8:30 - am Start zur 2. Etappe - Eingang in den Parc fermé  
 - at the start of Leg 2, at the entrance of Parc fermé  
 18:45 bis 19:15 - at finish ramp - bei der Zielankunft & Schlusskontrolle  
 19:30 bis 20:00 - at the finish-parc fermé & final scrutineering  
 20:30 bis 21:00 - am offiziellen Aushang während der Veröffentlichung der  
 inoffiziellen Ergebnisse bis zum Ablauf der Protestfrist  
 - at the official notice board during the publication of final  
 provisional results until the end of the protest period

### SONSTIGES / FURTHER:

- Anwesenheit an allen Regroupings und diversen Kontrollstellen während der Rallye  
 - presence at Regroupings and on different control points during the rally

## APPENDIX IV - COMPETITION NUMBERS AND ADVERTISING

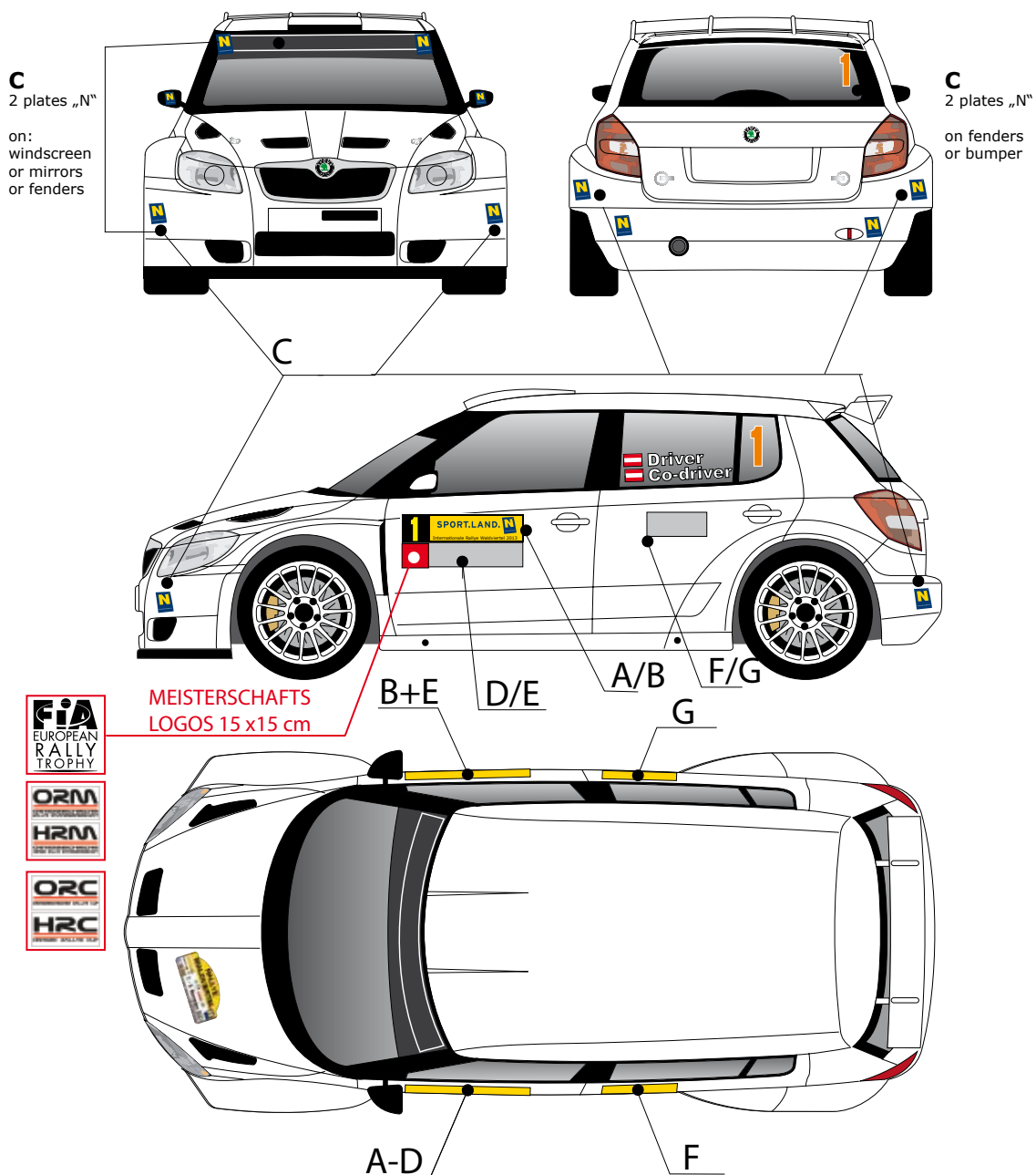
1. The Organizer reserve following places which must remain free according to this drawing:

### 1.1 Compulsory advertising:

- A/B** - Rally Competition Number Sportland NÖ / Rallye Waldviertel  
 - Rally plate (Bonnet)

### 1.2 „optional“ Organizers advertising:

- C** - sticker „Niederösterreich“ free choice of placement (minimum 2 peaces)  
**D-E** - sticker h=15 cm under the side door St.nr. „UNIOR & ATC“  
**F/G** - sticker 30 x 15 cm on driver side „K-SPORT & BEZIRKSBLÄTTER“,  
 on Co-driver side „METALLWELT & MODUL RINNENSYSTEME“



Dimensions of advertising \*C ( -free choice of placement) „Niederösterreich“ plates:  
 V1 = 10 cm high on windscreen  
 V2 = 8 cm high on mirrors  
 V3 = 15 cm high on fender / bumpers (15 cm on windscreen ASN Classes)

please fill in on your entry form the reserved places for advertising \*C (maximum = 2 plates)

## APPENDIX V - NON-LIABILITY CLAUSE

The participants are aware of, understand and fully accept the risks and dangers involved in motor racing. Should a participant be injured during an event, he explicitly declares through his entry for the event that he approves all medical treatment, rescue and transportation to hospital or other emergency facilities.

Such measures will be adopted by personnel appointed specifically for this purpose by the promoter, to the best of the personnel's knowledge and following their assessment of the participant's condition. The participants undertake to assume all related costs, provided such costs are not covered by the licence accident insurance or other insurance policies.

The participants hereby waive all direct and indirect claims for compensation from OSK, its officials, the promoter and/or Organizer or the racing circuit owners, from any other person or association linked with the event (including all officials and authorities or bodies who have granted licences for the event), and from other entrants and drivers/riders, hereinafter referred to as „the parties“.

The participants do so for themselves and their legal successors, and consequently for any insurance company with whom they may have concluded additional policies. In submitting their entries for this event the participants hereby declare that they irrevocably and unconditionally waive all rights, appeals, claims, demands, acts and/or proceedings which they themselves might institute or which might be instituted by third parties acting on their behalf against „the parties“.

The participants do so in connection with injury, loss, damage, costs and/or expenses (including lawyers' fees) which they may incur due to an incident or accident as part of the event. In submitting their entries for this event the participants declare irrevocably that they discharge, release and relieve „the parties“ for all time from any liability for such losses, and that they shall guard them against such losses and hold them harmless. In submitting their entries for this event the participants declare that they understand the full significance and repercussion of the present declarations and agreements, that they are entering into such obligations of their own free will, and in doing so irrevocably waive all right of action for damages against „the parties“, insofar as permissible as Austrian law currently stands.

The participants in any case renounce for themselves and their legal successors all claims against „the parties“, therefore in particular against the OSK, its officials, the promoter and/or Organizer or the racing circuit owners, and against the authorities or bodies who have granted licences for the event, regarding damage, loss, harm or injury of any kind connected with a typical sports risk, in particular any typical and foreseeable damage, loss, harm or injury. This applies also in the event of minor negligence on the part of „the parties“.

## APPENDIX V - ARBITRATION AGREEMENT

a) Any dispute arising between the participants and the OSK or its officials, and the promoter and/or Organizer, and between the OSK or its officials and the promoter and/or Organizer, as a result of claims (personal injury, damage to property or financial damage) in connection with the motor-racing event, training sessions or races shall be settled definitely by an arbitration tribunal to the exclusion of the courts of general jurisdiction.

b) The arbitration tribunal shall consist of three arbitrators, namely the umpire and two assessors. The umpire shall be a lawyer or former judge and have experience of liability matters in connection with motor racing.

c) Each party shall appoint an assessor within two weeks of notification of the intent to initiate arbitral proceedings. Should the dispute be referred by several claimants or be levelled at several defendants, the arbitrator shall be appointed by agreement between the joined parties. The assessors shall elect the umpire. Should the assessors be unable to agree on the person of the umpire within two weeks, the umpire shall be appointed by the President of the Vienna Chamber of Lawyers upon application by an assessor, with due regard to clause b). The assessors shall however be free at any time to replace the umpire appointed in this way by another umpire by mutual agreement.

d) Should a party fail to appoint its assessor within two weeks of receiving the written request from the opposite side, or should several joined parties be unable to agree on an assessor within that period, the assessor shall be appointed by the President of the Vienna Chamber of Lawyers on the motion of the other party. The same shall apply should an assessor withdraw from office and the party concerned not appoint a successor within two weeks.

e) Should an arbitrator not assume office, refuse to discharge his duties, cause improper delay or become unfit to act, the aforementioned provisions shall apply accordingly for the appointment of a replacement. The arbitrator concerned shall be dismissed at the same time.

f) The arbitration tribunal shall in principle be free to conduct its proceedings as it sees fit, with due regard for the subsidiary legal provisions. The tribunal shall sit in Vienna. The arbitration tribunal may also investigate without petition any circumstances which it deems necessary to clarify the facts of the case, and take evidence.

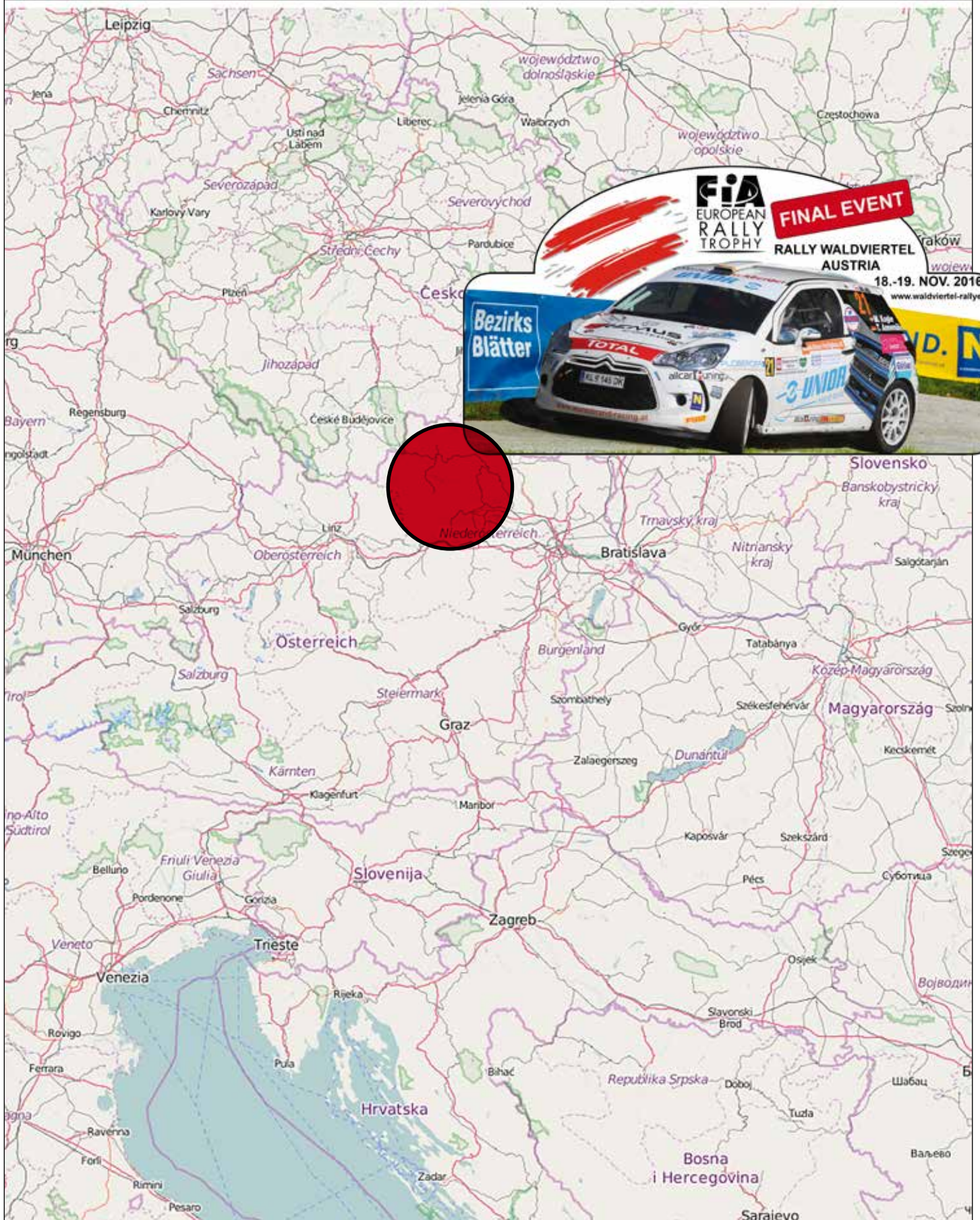
g) The arbitration tribunal shall decide by simple majority. The tribunal shall state the full reasons for its award. It shall also decide on cost apportionment for the costs of both the arbitration proceedings and the legal representation. The arbitrators shall be remunerated in accordance with the provisions of the Austrian lawyers' scale of charges.

h) The arbitration tribunal shall also be entitled to the exclusion of the courts of general jurisdiction to issue injunctions, provided the opposing party is first given an opportunity to express its views. An injunction may also be lifted upon petition in the event of a significant change in circumstances.

i) Sports jurisdiction shall remain unaffected by the present Arbitration Agreement.

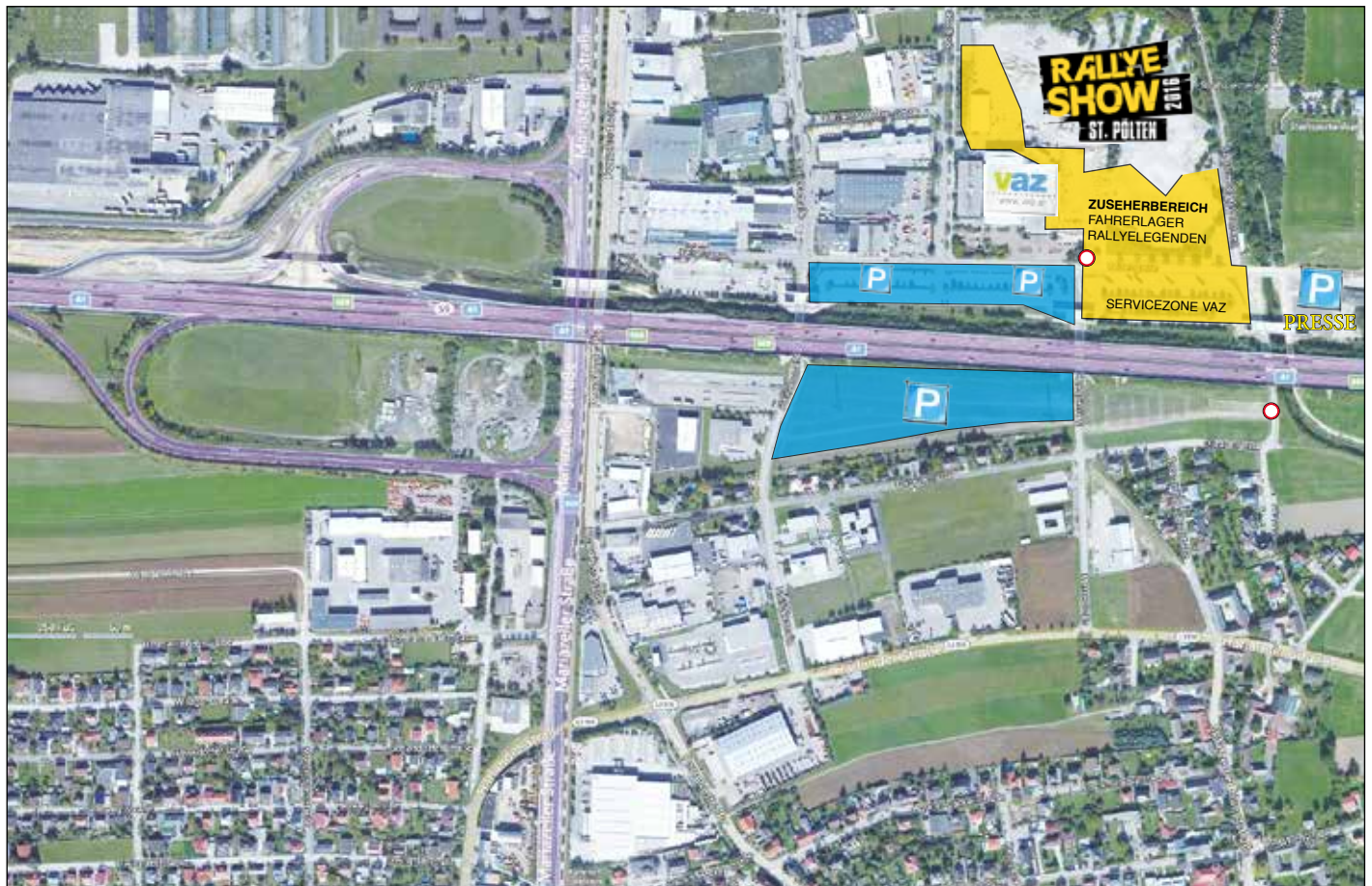


## OVERVIEW MAP CENTRAL RALLY TROPHY





## MAP RALLYESHOW ST.PÖLTEN







# Waldviertel

## pure & unspoiled

Waldviertel is in the northern part of Austria. The natural landscape is the main character on our stage. If you are looking for authentic, unaltered nature, you've come to the right place. There are no frills nor fancy productions here. What you will find, however, has originated, grown and developed here. Bizarre rock formations, deeply buried river courses, clear air, gigantic forests and colourful poppy fields - this is what the Waldviertel is all about. Wander around the sunny south, scale the highest hills or plunge in cool waters of barrier lakes. Marvel at the wobbling stones, explore ancient castles and palaces and indulge the taste of Waldviertel. Feel the power of nature and engage in its genuinity.



### information services

**Waldviertel Tourismus**  
3910 Zwettl, Sparkassenplatz 1/2/2  
(T) +43 (0) 2822/54109  
(E) info@waldviertel.at  
(I) www.waldviertel.at

### accommodation services

**Waldviertel Incoming**  
3970 Weitra, Rathausplatz 1  
(T) +43 (0)2856/2998, Fax DW 16  
(E) info@waldviertel.incoming.at  
(I) www.waldviertel-angebote.at